

# INTRODUCING

## The first 15# Breathable Synthetic Roof Underlayment



# Sahara™ AnchorDeck™

SURE-BREATHE  
TECHNOLOGY

WITH MULTIPLE LAYERS OF WATERPROOFING

At Sentry, we live and breathe synthetic roofing underlayment. We manufacture and stand by our products. So, when we claim that Sahara™ AnchorDeck™ is the only breathable synthetic roofing underlayment with multiple layers of waterproofing protection, you can trust that it was produced with state-of-the-art equipment by experts who excel in creating exceptional waterproof products. Using Sahara™ AnchorDeck™ breathable underlayment allows for roof decks exposed to rain or snow during construction to dry after the primary roof has been installed. Breathability is vital in preventing mold, mildew, and potential structural damage. By specifying Sahara™ AnchorDeck™ breathable underlayment, you'll gain the competitive edge, giving your clients the confidence and security they demand to safeguard their valuable homes or buildings.

Sahara AnchorDeck's textured, slip-resistant walking surface offers excellent steep-slope walkability, productivity, comfort, and increased safety for roofers. Sahara™ AnchorDeck™ is designed for use under various roof types, including asphalt shingles, concrete tiles, synthetic shingles, primed cedar shakes, and metal roof systems, such as stone-coated steel shingles, metal panels, and metal accents. Sahara™ AnchorDeck™ meets all the necessary code requirements, including ASTM D226, ASTM D4869, ASTM D8257 and AC 188, as mandated by ICC-ES.

### Multiple Layers of Waterproofing



Rest assured knowing Sahara™ AnchorDeck™ is the only breathable underlayment manufactured with multiple layers of waterproofing that provides unparalleled protection against moisture damage, while also allowing for the same crucial breathability aspect of 15# felt.

- Multiple layers of waterproofing protection
- 7 US perm rating (higher than felt)
- Outstanding strength to weight ratio
- Sure-Breathe technology maintains the breathability aspect of 15# felt
- Delivers all-temperature, all-weather performance, remaining pliable and easy to install in conditions ranging from -40°F to 240°F
- †Minimizes stretching around fasteners with no blow-offs!
- Meets CAN/CSA A220.1 and CAN/CSA A123.3
- Class A fire rating - ASTM E108
- Meets ASTM D8257, ASTM D226 Types I & II and D4869 Types II & IV
- 90 days UV exposure
- Limited 20 year warranty

Sahara™ AnchorDeck™ repels liquid water during new construction or re-roofing and continues to protect against primary roofing failure with multiple layers of waterproofing protection.



Ask for it at your nearest roofing distributor today!



Outstanding  
walkability for  
increased safety  
& productivity

ALL TEMP. ALL WEATHER PERFORMANCE



SNOW



STORMS



RAIN



HAIL



WIND



UV



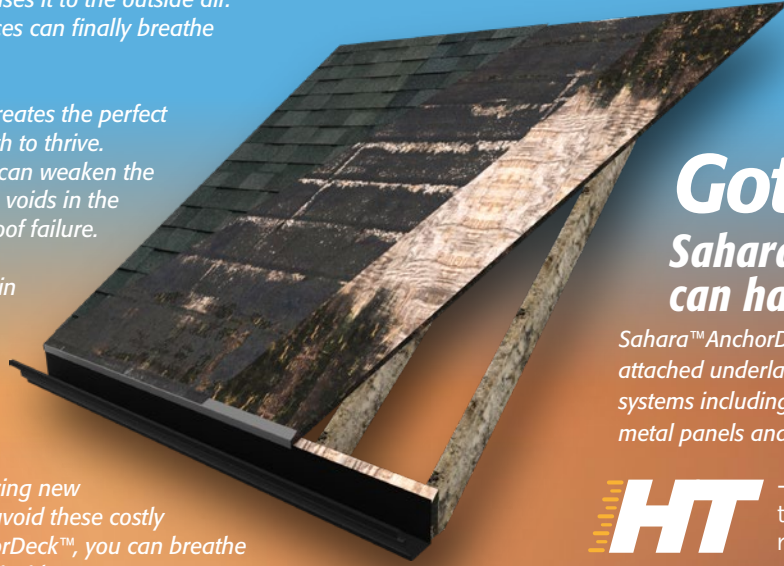
# Why you should use Sahara™ AnchorDeck™ breathable roof underlayment.

Sahara™ AnchorDeck™ is not just any underlayment - it's a game-changer. Our innovative product actively draws trapped moisture through the underlayment and releases it to the outside air. This means wet roof decks or damp attic spaces can finally breathe and become a drier, healthier roof system.

When moisture is trapped within the roof, it creates the perfect environment for black mold and fungal growth to thrive. Unseen from the outside, mold and moisture can weaken the structural integrity of the roof system, causing voids in the roof deck and ultimately leading to primary roof failure.

As a home seller, the presence of black mold in the attic space can be a major problem. Removal is expensive, poses a potential health hazard, and can significantly impact the value of your property.

Fortunately, using a breathable synthetic roof underlayment like Sahara™ AnchorDeck™ during new construction or re-roofing is a simple way to avoid these costly headaches in the future. With Sahara™ AnchorDeck™, you can breathe easy knowing your roof is protected from the inside out.



## Got Metal? Sahara™ AnchorDeck™ can handle the heat!

Sahara™ AnchorDeck™ is the ideal mechanically attached underlayment for use under metal roof systems including stone coated steel shingles, metal panels and metal accents.

**HT** -40° F to 240° F  
temperature range



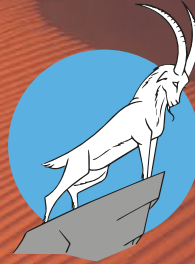
### SURE-BREATHE TECHNOLOGY

Sure-breathe technology maintains the breathability aspect of 15# felt! Installing Sahara™ AnchorDeck™ helps keep your projects dried-in during new construction or re-roofing, and assists in drawing moisture out of the attic space for the lifetime of the roofing system.



### Multiple Layers of Waterproofing

Rest assured knowing Sahara™ AnchorDeck™ is the **only** breathable synthetic underlayment manufactured with multiple layers of waterproofing!



### Steep slope confidence

Sahara™ AnchorDeck™ combines micro-etched slip resistance **plus** Nexgen surface grip technology for unmatched walkability you can trust, every time.



### No more felt blow-offs!

Sahara™ AnchorDeck™ is up to 8 x stronger than felt! Sahara™ AnchorDeck™ stays secured to the deck in all weather conditions & minimizes tearing around fasteners!.

## Sahara™ AnchorDeck™ creates a drier, healthier roof system.

Switch to Sahara™ AnchorDeck™ and start saving on labor, time & money!  
Contact us today!



HEALTHY  
ROOF SYSTEM  
APPROVED



**20**\* Year  
Limited  
Warranty

\*See our website for full T&C's



**Sentry Building Innovations**  
1209 Orange Street, Wilmington,  
New Castle, Delaware 19801  
Customer Service: 1-843-735-1773



### Test/Standard\*

Tensile Strength ASTM D5034  
Tear Strength ASTM D4533  
Liquid Water Transmission ASTM D4869  
Fire Rating ASTM E108  
UV Exposure  
Temperature Range

### Typical Value

MD 95 lbs (43 kg) | CD 85 lbs (38.5 kg)  
MD 18 lbs (8.16 kg) | CD 16 lbs (7.26 kg)  
Pass  
Class A  
3 Months  
-40° F - 240° F

### Roll/Pallet Specs

Length per roll: 286' / 87 m  
Width per roll: 42" / 1.1 m  
Weight per roll: 23 lbs / 10.4 kg  
Roll size: 10 sq / 93 m<sup>2</sup>  
Rolls per pallet/truck: 49 / 1,960

\*Test data is based on average taken over several production runs and should not be considered or interpreted as minimum or maximum values. Values are typical data and not limiting specifications. †Grains/h/ft<sup>2</sup>/in Hg (perms) All values ± 10 %. This product is manufactured in accordance with national standards which allow for non-critical variances in weights and measures.  
ENG-SAHARA-AD APR23

†When correctly installed as per Sahara™ AnchorDeck™ installation instructions. All Sahara™ AnchorDeck™ product installation instructions are available from our website: [www.saharaanchordeck.com](http://www.saharaanchordeck.com)